

**CHILD PLACING AGENCY  
OVERVIEW  
September 12, 2008**

**A. NUMBER OF CHILDREN IN OUT-OF-HOME CARE**

**1. How many children are placed with CPA's of the states total placement caseload?**

Out of the 13,739 children in out-of-home care in Georgia, 14% are currently placed with 46 Child Placing Agencies (CPA).

**Table 1: Number of Children in Foster Homes in Georgia**

	<b>CPA</b>	<b>DFCS</b>
<b>SFY2005</b>	2204	5718
<b>SFY 2006</b>	2320	5069
<b>SFY2007</b>	2282	5090
<b>SFY2008</b>	1886	3915

**B. PERFORMANCE OUTCOMES**

**1. DO CPA's ACHIEVE BETTER OUTCOMES FOR CHILDREN PLACED IN THEIR FOSTER HOMES?**

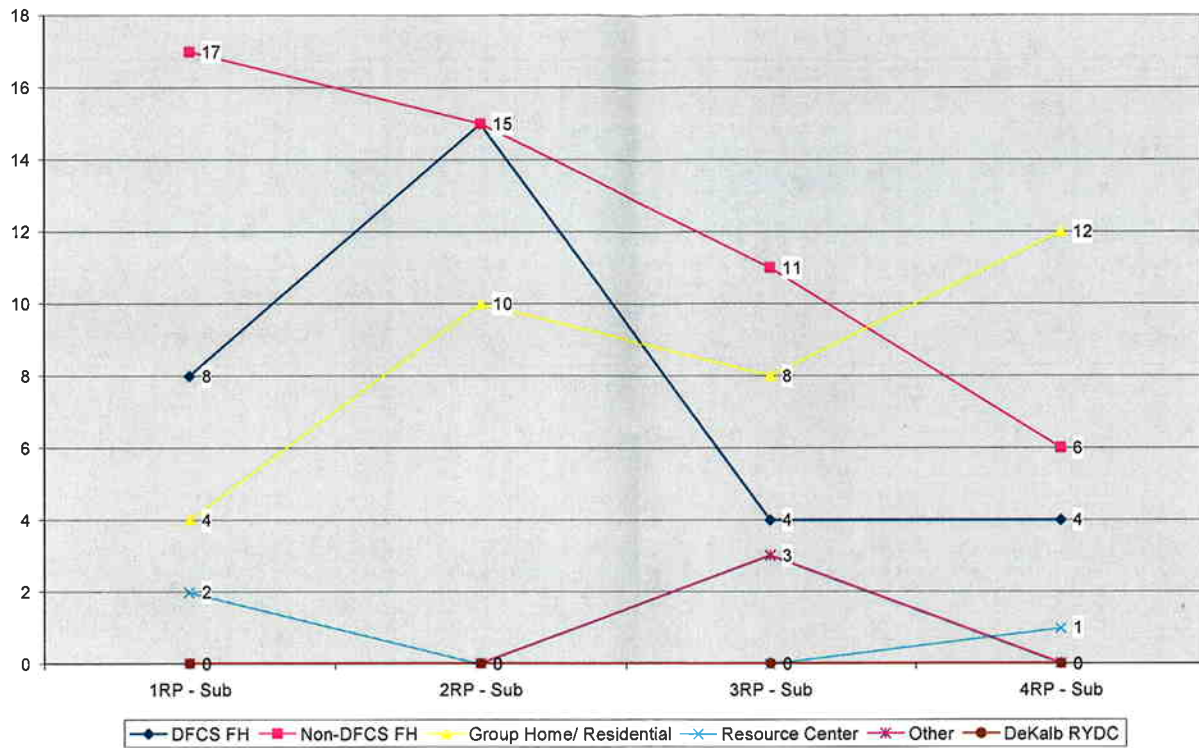
**MALTREATMENT IN CARE**

**Table 2: Maltreatment in Care Statewide from SFY2004 to SFY 2008**

	<b>DFCS Foster Homes</b>	<b>Non-DFCS Foster Homes (CPAs)</b>
<b>SFY2005</b>	117 (2.0%)	29 (1%)
<b>SFY2006</b>	91 (<1%)	61 (2.6%)
<b>SFY2007</b>	100 (1.9%)	72 (3.1%)
<b>SFY2008</b>	102 (2.6%)	61 (3.2%)

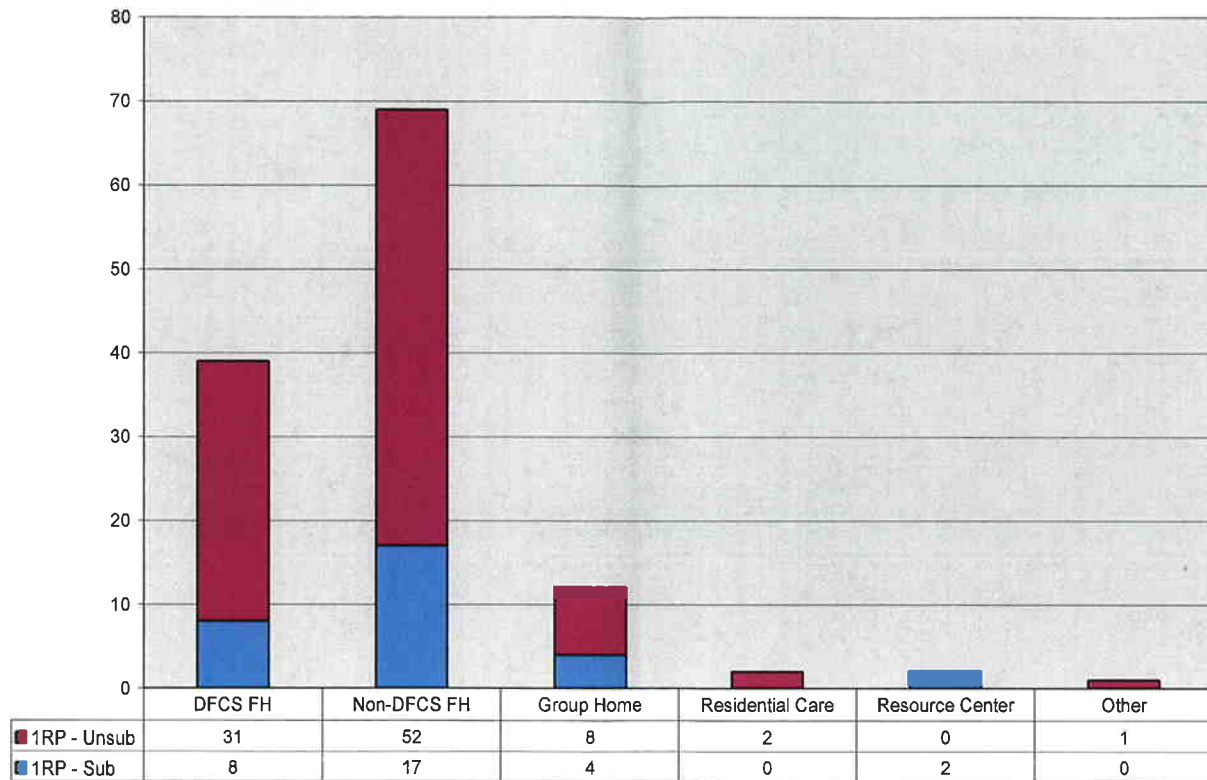
From 2006 to 2008 CPA's have had a higher percent of children with substantiated abuse findings. Focused work with CPA's in 2008 has narrowed the gap.

**Figure 1. Maltreatment in Care by Placement and Reporting Period (Fulton & DeKalb)**



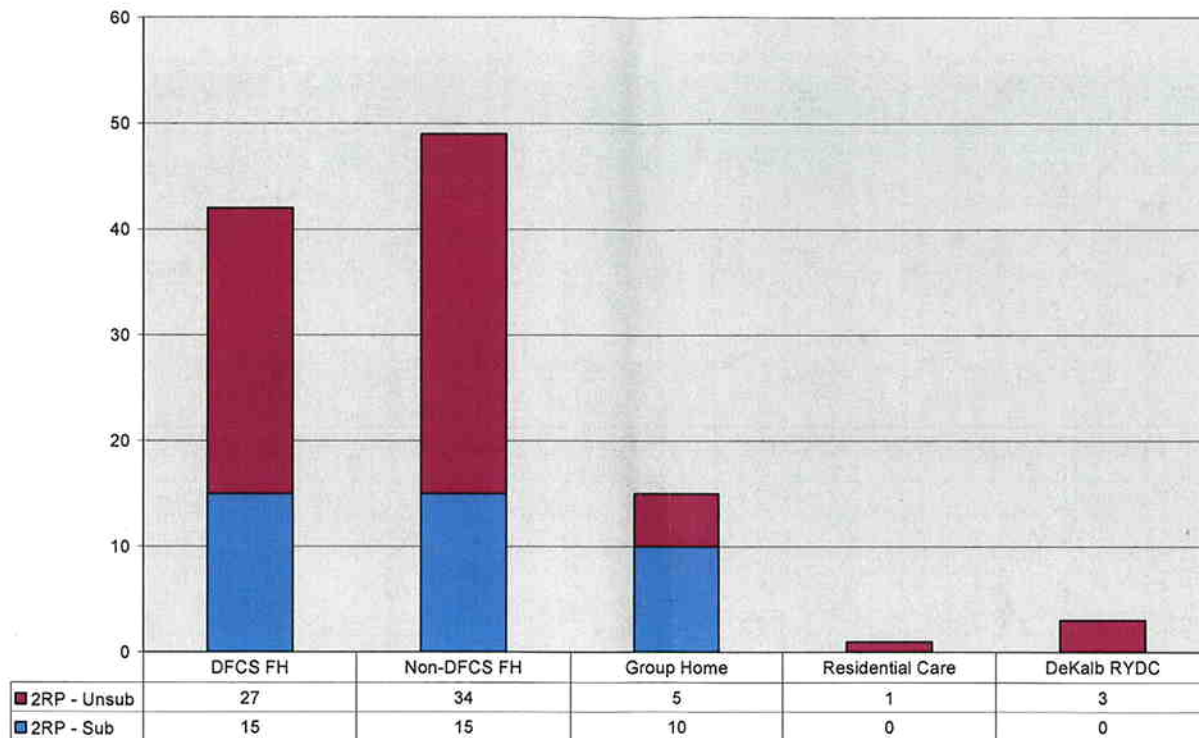
From the second to the fourth reporting period CPA's have had a higher number of substantiated maltreatment for Kenny a class members. See Figure 2, 3 and 4.

**Figure 2. First Reporting Period Maltreatment Determination by Location (Fulton & Dekalb)**



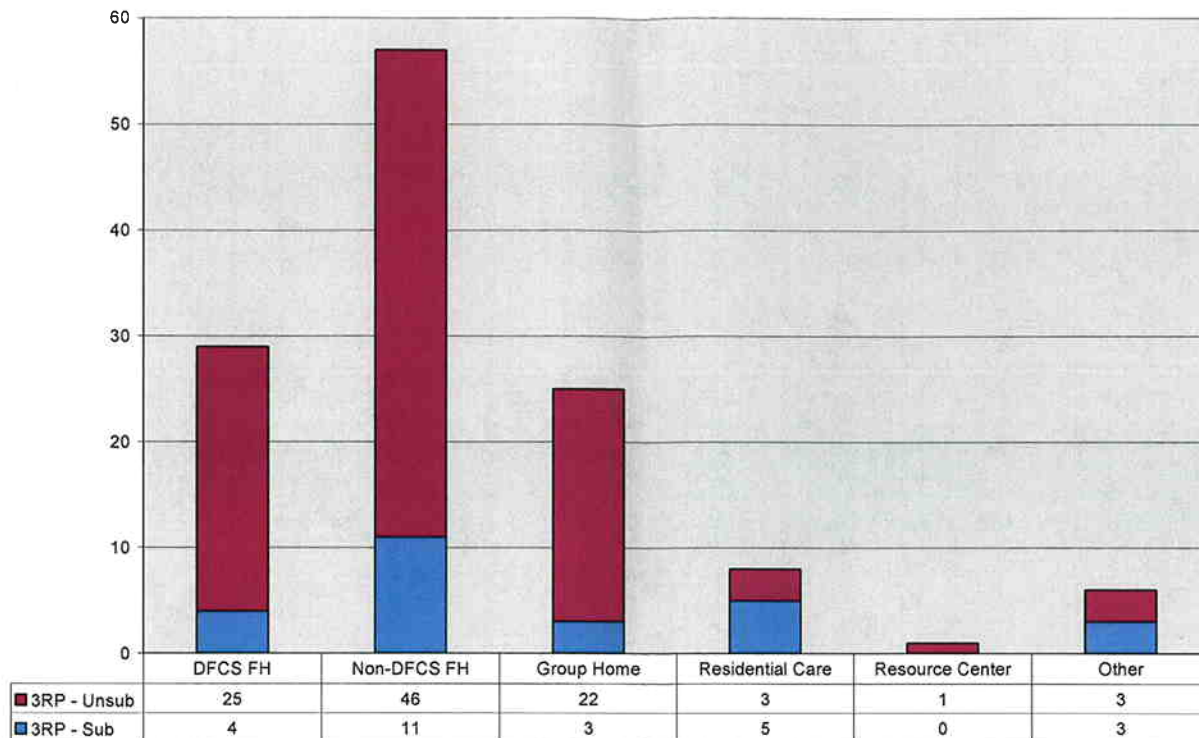
CPA's have had a higher number of both reports and substantiation for Kenny A class members.

**Figure 3. Second Reporting Period Maltreatment Determination by Location (Fulton & DeKalb)**



CPA's have had a higher number of alleged abuse reports and substantiations for Kenny A class members.

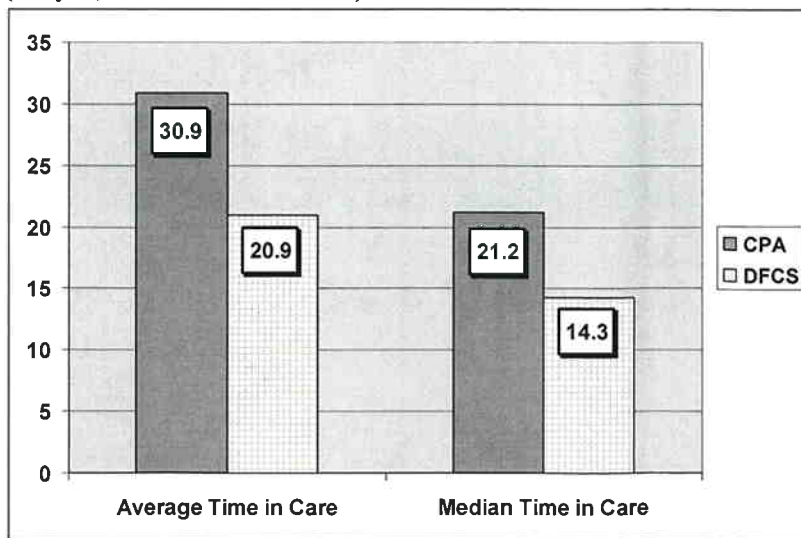
**Figure 4. Third Reporting Period Maltreatment Determination by Location (Fulton & DeKalb)**



CPA's have had a higher number of both reports and substantiation for Kenny A class members.

**LENGTH OF STAY**

**Figure 5. Time in Care in Months (July 1, 2007 to June 2008)**

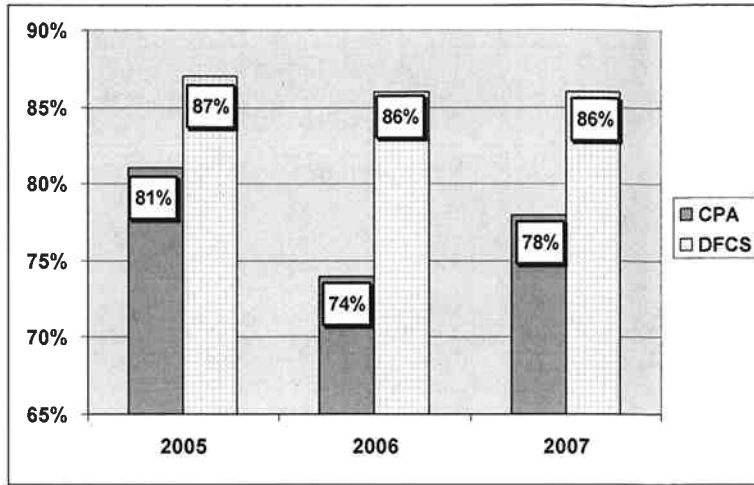


During the period of July 1<sup>st</sup>, 2007 and June 30<sup>th</sup>, 2008, the average and median time in care have higher for children placed with CPA's than DFCS foster homes.

## CFSR OUTCOMES

**Figure 6. PERMANENCY STABILITY from SFY 2005 to 2007**

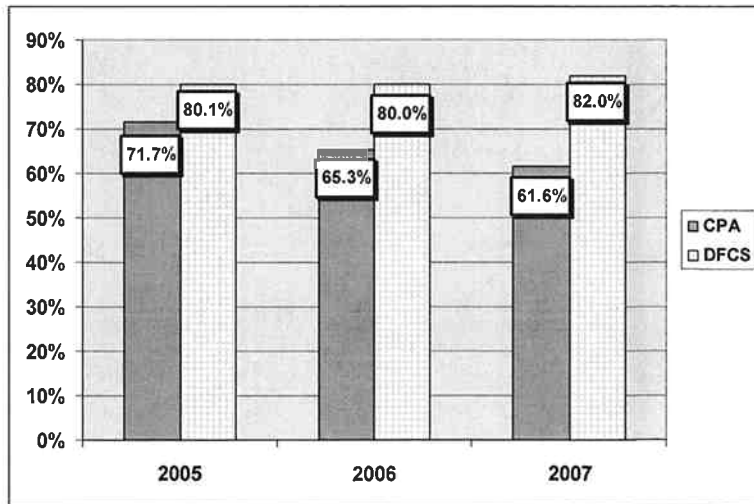
This outcome is defined as “Of all children who were in care for 12 months or less, how many had less than two moves while in foster care?”



Children in CPA's have consistently had a higher number of moves while in foster care from 2005 through 2007.

**Figure 7. Timeliness to Reunification**

Out of all children who lived in each placement type, the percentage of children who exited foster care to reunification within 12 months.

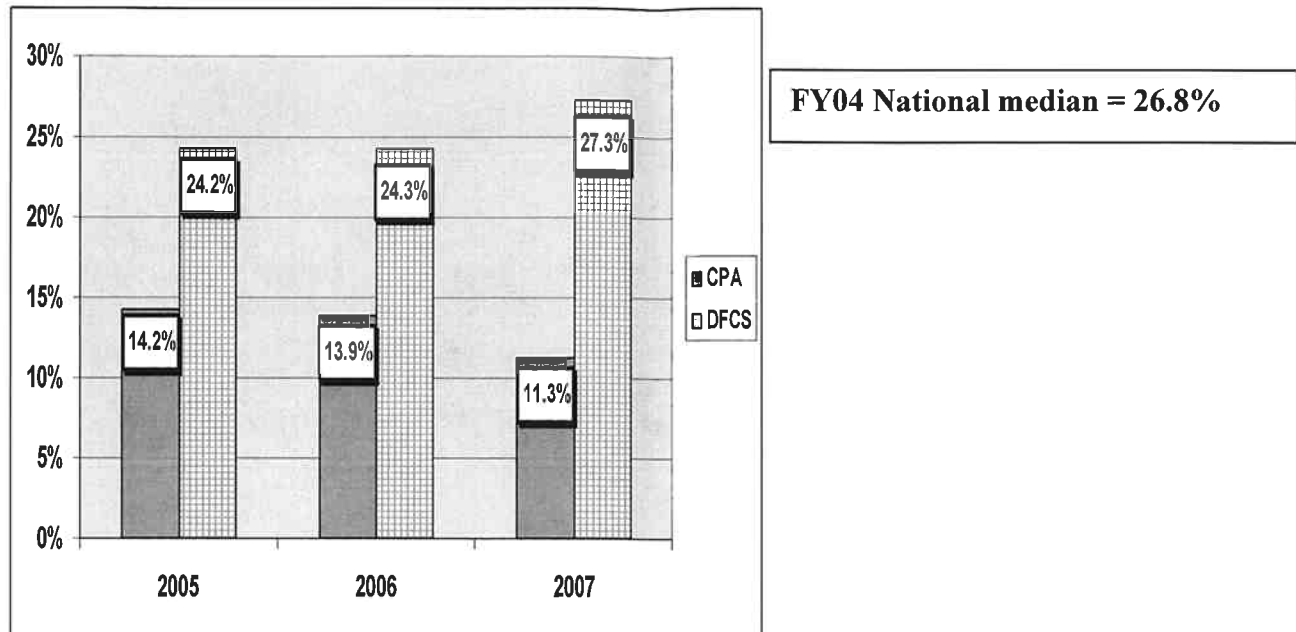


**National Standard: greater than or equal to 76.20%.**

Of the children placed with CPA's a lower percentage exit to reunification within 12 months.

**Figure 8. Timeliness to Adoption**

Out of all children who live in each placement type, the percentage of children who exited foster care to adoption in less than 24 months.



Of the children placed with CPAs a lower percentage exit to adoption within 24 months.

**Table 3: Average Time to Reach Permanency Goal (In Months)**

	CPA			DFCS		
	2005	2006	2007	2005	2006	2007
<b>Reunification</b>	9.6	11.6	9.7	7.0	7.0	6.4
<b>Adoption</b>	48.3	43.2	46.8	37.5	37.5	35.2
<b>Live with Relative</b>	9.9	11.6	13.7	6.9	7.5	6.6

From 2005 through 2007, children placed with CPA's have taken longer to achieve their permanency goals

**Table 4: Provider Relations CPA Compliance Report (February – September 2008)**

2008	Total Number of CPA Homes	Total Homes in Full Approval Status	Total Homes out of Approval Status	% of homes approved	% of homes not in approval status
<b>February</b>	1524	619	905	<b>41%</b>	<b>59%</b>
<b>March</b>	1428	806	622	<b>56%</b>	<b>44%</b>
<b>April</b>	1464	1012	452	<b>69%</b>	<b>31%</b>
<b>May</b>	1482	1151	331	<b>78%</b>	<b>22%</b>
<b>June</b>	1437	1221	216	<b>85%</b>	<b>15%</b>
<b>July</b>	1421	1339	82	<b>94%</b>	<b>6%</b>
<b>August</b>	1443	1400	43	<b>97%</b>	<b>3%</b>
<b>September</b>	<b>1439</b>	<b>1409</b>	<b>30</b>	<b>98%</b>	<b>2%</b>

In 2008, DFCS identified serious deficiencies with the approval status of CPA homes. Monitoring has improved compliance.

## C. ADMINISTRATIVE CONCERNS

### 1. Office of Regulatory Services Adverse Actions for Fiscal Year 2008

Eleven out of 46 CPAs had the following adverse actions taken against them: non-renewals and denied licenses, fine impositions, and civil penalties.

### 2. Kenny A Private Provider Quality Assurance Reviews (See Attachments)

**Finding:** Of the private 93 homes reviewed, 88 or 94.6% had at least one administrative violation

The Quality Assurance Unit reviewed 93 private foster homes in May of 2008. Of the 93 homes reviewed, 88 or 94.6% had at least one administrative documentation violation. Violations found included: no family assessment, lack of sexual offender registry clearance, no or incomplete criminal history check, no drug screens, no or incomplete medicals, and placements exceeded approval age, gender, or number.

### 3. Kenny A. Period 2 Monitoring Report

**Finding:** DFCS foster home compliance was higher than CPA foster homes.

The Kenny A. Period II Monitoring Report cites the following:

“Compliance with the relevant approval processes was particular strong among group homes (100%), child-caring institutions (100%), and DFCS-supervised foster homes (97%). *However, improvement is needed in conducting and/or properly documenting the approval process among provider-supervised foster homes (81%) and non-foster relative placements (56%)*” (See Attachment. Table VI-2).

### 4. Kenny A. Period 3 Monitoring Report

**Finding:** DFCS foster home approval process was 100%. CPA’s performance improved to 88%.

The Kenny A. Period III Monitoring Report cites the following:

“Compliance with the relevant approval processes was particular strong among group homes (100%), child-caring institutions (100%), and DFCS-supervised foster homes (100%). *In addition, modest improvement was apparent in conducting and/or properly documenting the approval process among provider-supervised foster homes (which appear to have increased from 81% to 88% since the second reporting period) and unpaid relative placements (which appear to have increased from 56% to 59%). However, both changes are within the sample’s margin of statistical error, and even with the apparent improvement remain too low*” (see Attachment. Table VI-2).