

Child Welfare in Georgia: A Focus on the Future

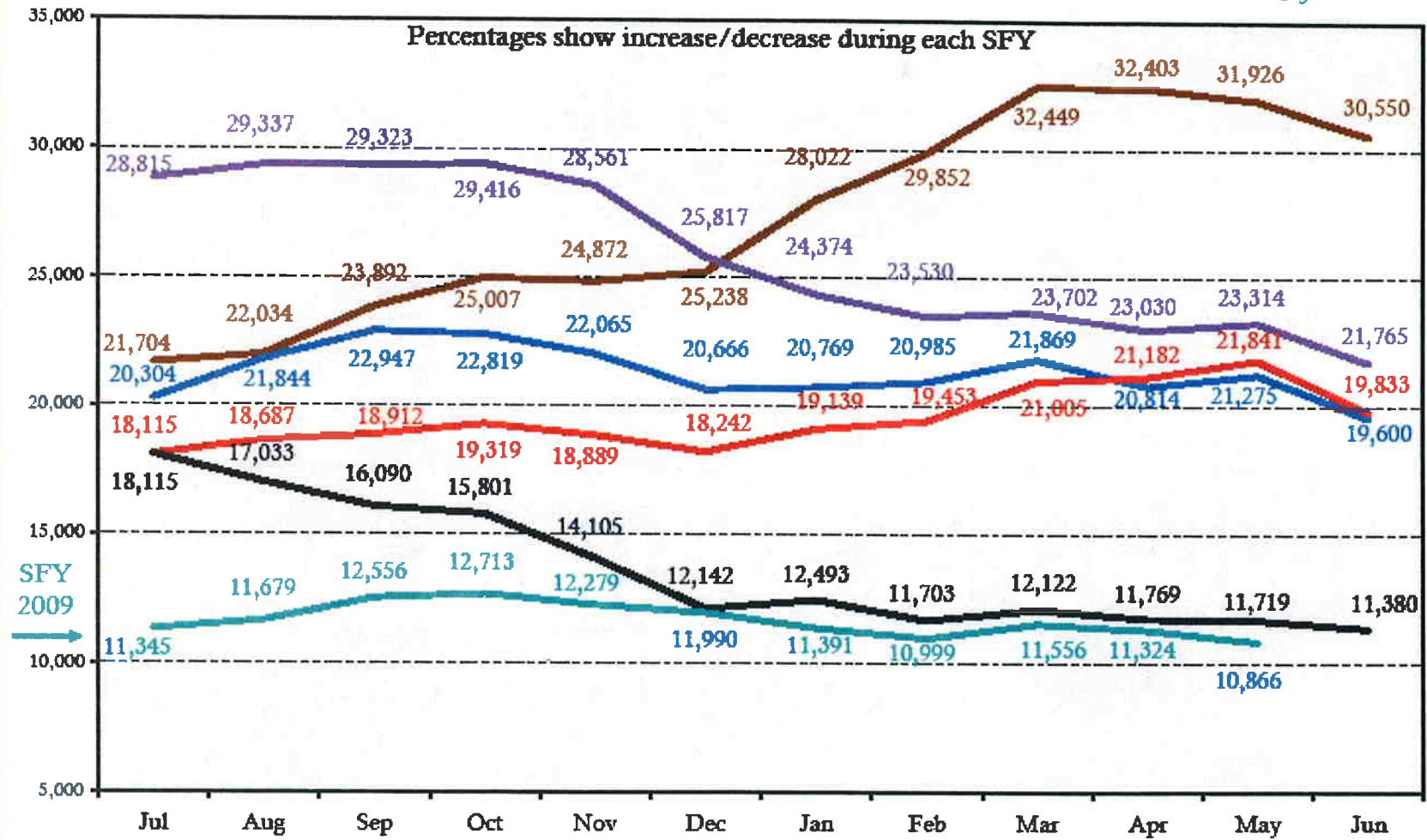
An Executive Forum

Sponsored by the Georgia Department of Human Resources and Casey Family Programs.

Hosted by the Arthur M. Blank Family Foundation and the Tull Foundation.

Child Protective Services Active Cases

SFY 2004 / SFY 2005 / SFY 2006 / SFY 2007 / SFY 2008 / SFY 2009
 +40.8% -24.5% -3.5% +9.5% -37.2% -4.2% ytd



Sources: SHINES May-09

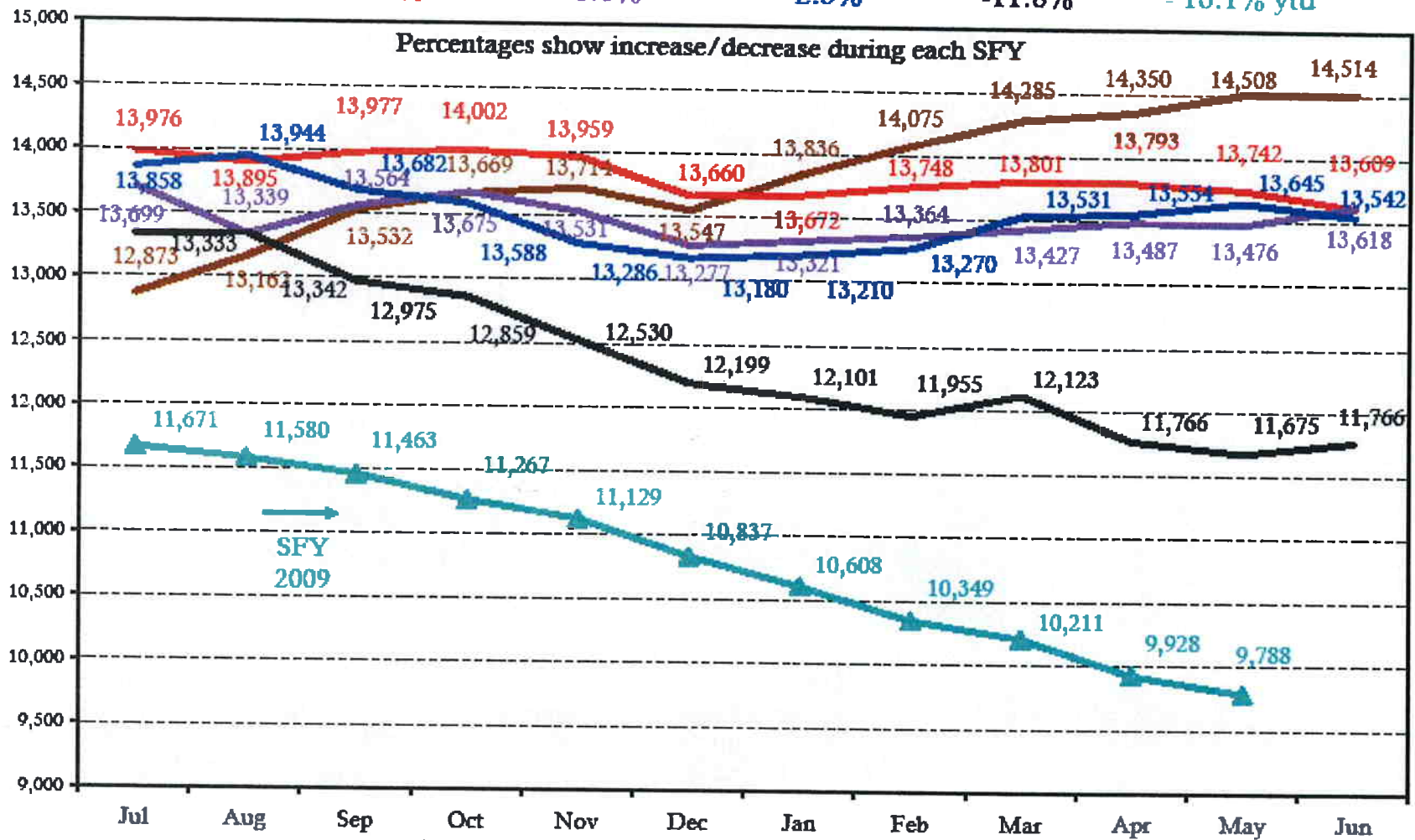
Note: includes all cases active at some time during the month

Data Analysis and Reporting Section CW-3

Children in the Legal Custody of DFCS

SFY 2004 / SFY 2005 / SFY 2006 / SFY 2007 / SFY 2008 / SFY 2009

12.7% -2.6% 0.6% -2.3% -11.8% -16.1% ytd



Sources: IDS, SHINES May-09

Note: includes all cases active at some time during month; excludes Aftercare, ICPC, Placement services to parents, and Boarding Country.

Data Analysis and Reporting Section CW

Improvements in Georgia Child Welfare Indicators

	SFY 2004	SFY 2009
Average Social Worker Caseload	26	15
Timely Completion of Investigations	76.0%	96.2%
Recurrence of Maltreatment	9.2%	2.8%
Foster Care Re-entry	8.0%	3.9%
Foster Care Population	14,514	9,788
Number of Children in Group Care	3,802 (SFY 2005)	2,871
Average Months from Entry to Finalized Adoption	42	35