

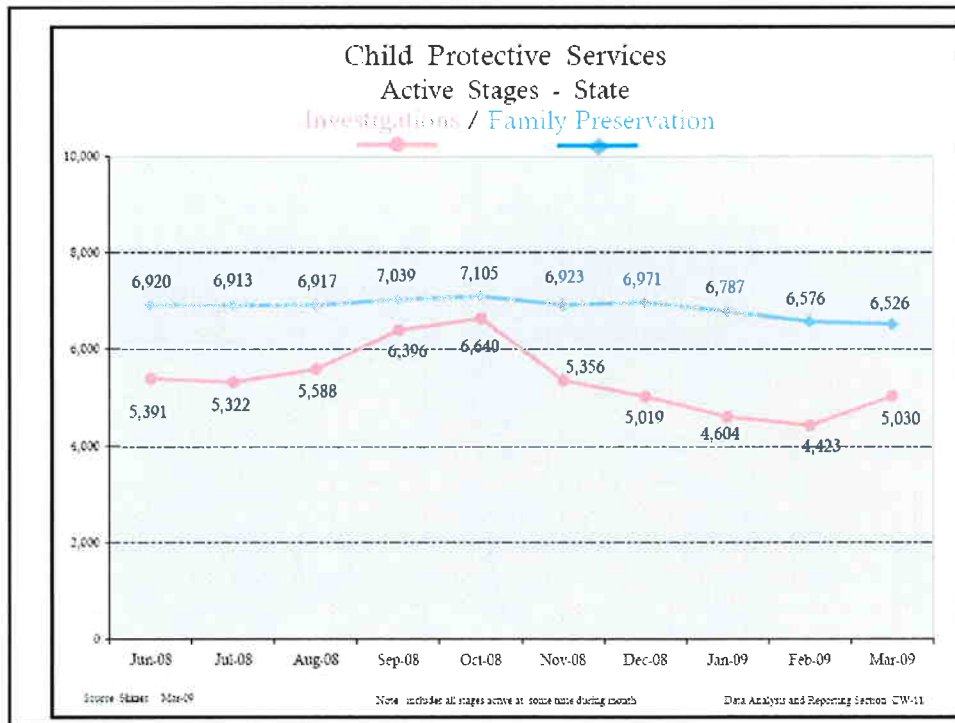
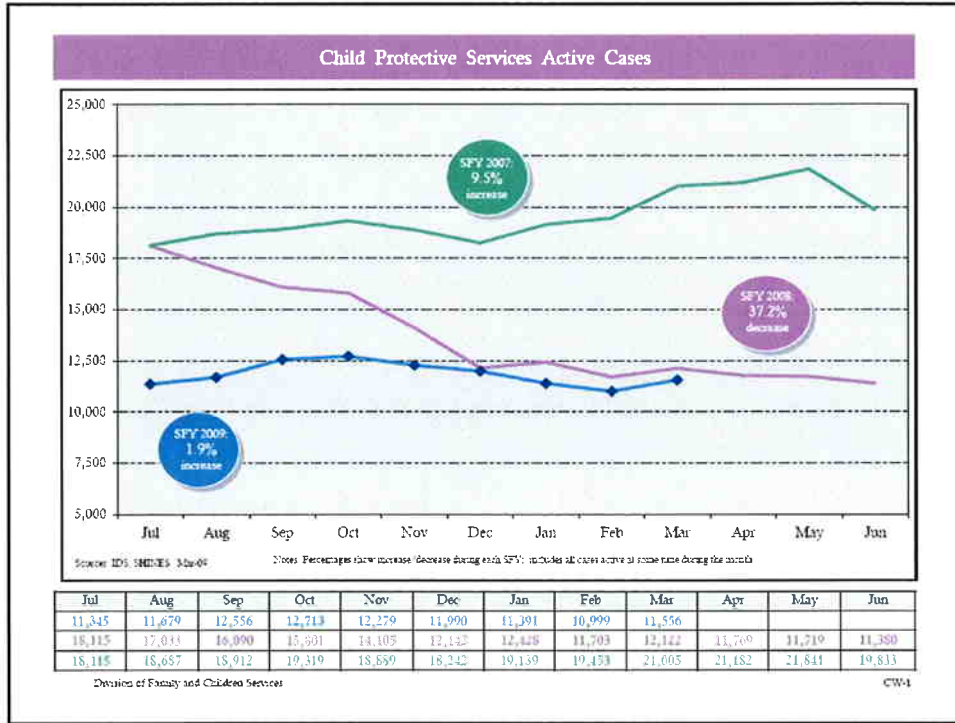


1

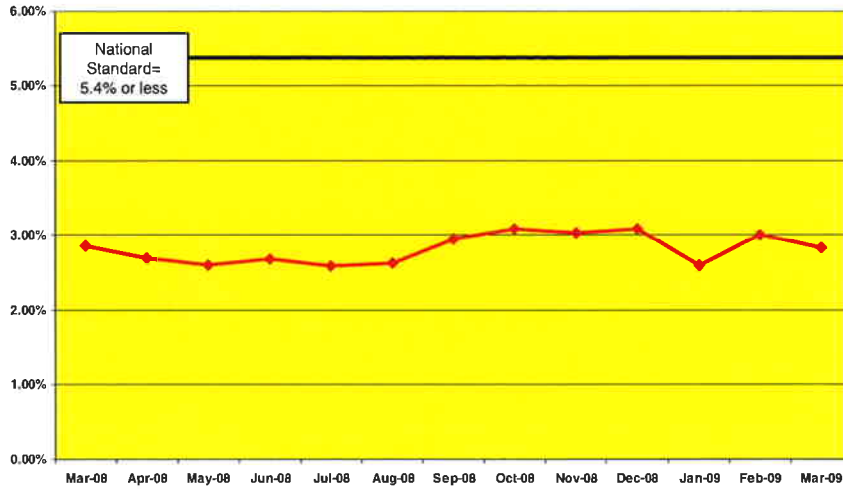
AGENDA

- Safety
- Permanency
- Well-being
- Family Independence

2

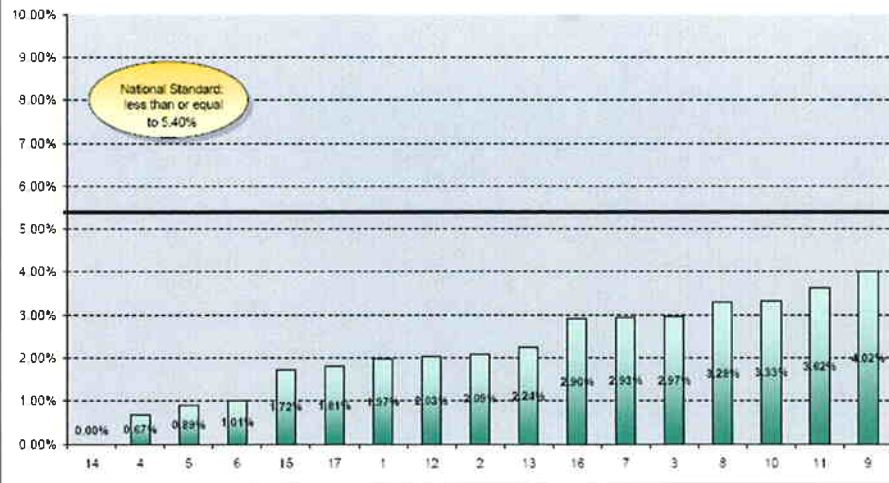


RECURRENCE OF MALTREATMENT March 2008 – March 2009



Month	Mar-08	Apr-08	May-08	Jun-08	Jul-08	Aug-08	Sep-08	Oct-08	Nov-08	Dec-08	Jan-09	Feb-09	Mar-09
Rate	2.86%	2.70%	2.61%	2.68%	2.59%	2.63%	2.95%	3.09%	3.04%	3.09%	2.60%	3.01%	2.83%

Recurrence of Maltreatment Rolling Quarterly Average January 2009 to March 2009

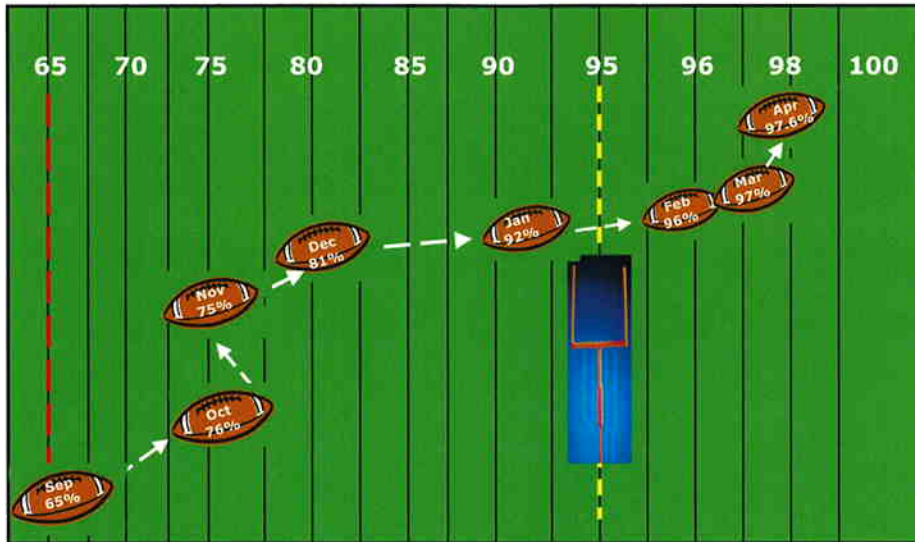


Source: SHINES; PGOS

Note: The National Standard is a 5.40% rate of the existence of recurrence. Recurrence calculated with 2-month lag.

Data Analysis and Reporting Section

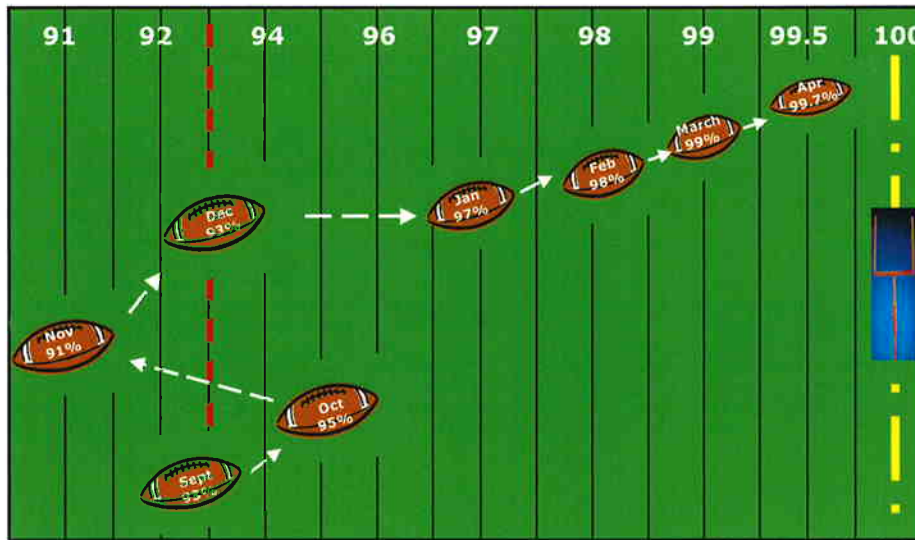
Lag Measure: Increase Safety Response from 65% to 95% by June 2009



Score for April 23, 2009: 97.6%

7

Lead Measure 1: Increase Timely Completion of Investigations from 93% to 100% by June 2009



Score on April 23, 2009: 99.7% Timely

8

