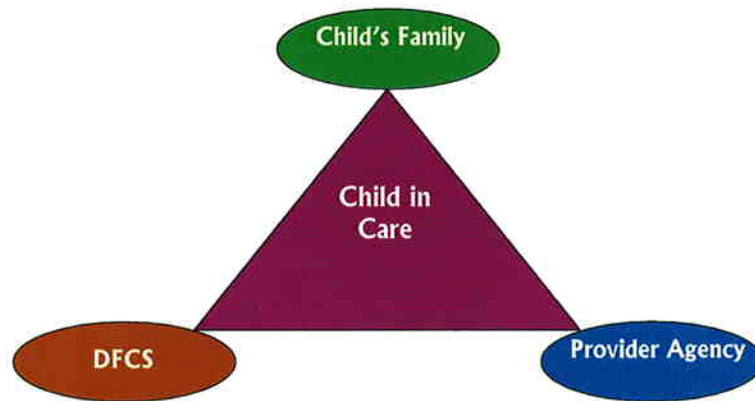


**PROVIDER SERVICES  
G-FORCE MEETING**  
-- Child Placing Agencies --



**October 20, 2009**

## **Welcome!**

- **Ground Rules / G-Force Overview**
- **General Characteristics of Children in Care by Placement Type**
- **Focus on Permanency Composites: Children in Care for Long Periods & Placement Stability**
- **Characteristics of Children in Care by Provider**

### **Ground Rules**

- Open discussion
- Participative / engaged
- Critical thinking
- All bright ideas welcomed!

3

### **G-FORCE PRINCIPLES**

- Value-based
- Performance-driven
- Hypothesis-testing
- Strategy-development
- Evidence-based decision-making
- Follow-up & accountability

4

## **WHAT VALUES DRIVE OUR WORK WITH CHILDREN?**



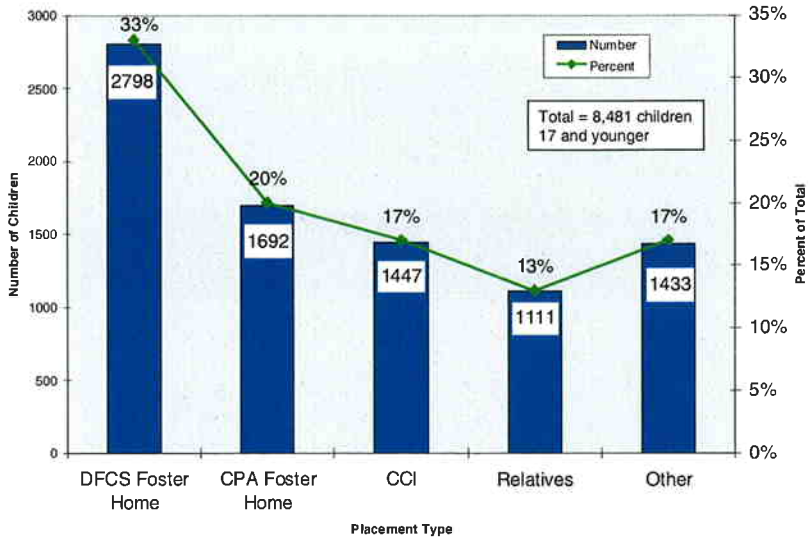
5

## **CHARACTERISTICS OF CHILDREN BY PLACEMENT TYPE**

- Characteristics of children currently in care (September 30, 2009).
- Characteristics of children who left care in SFY 2009.

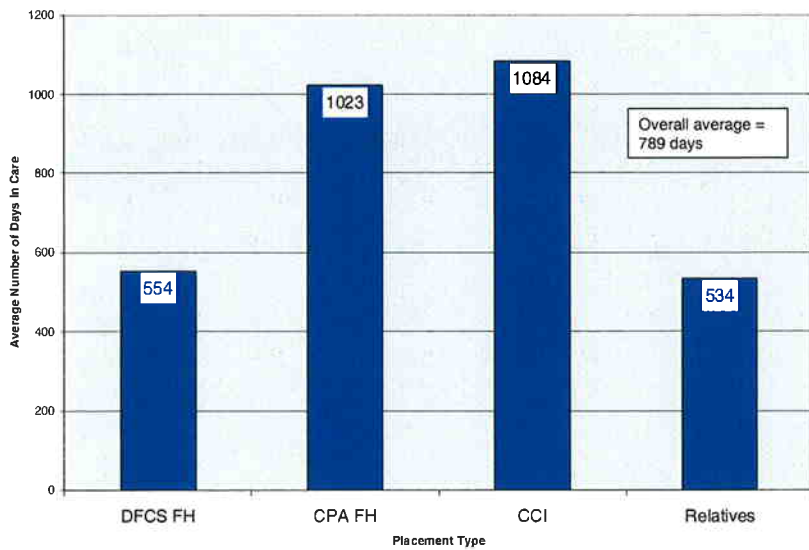
6

## Number of Children in Care by Placement Type – September 2009



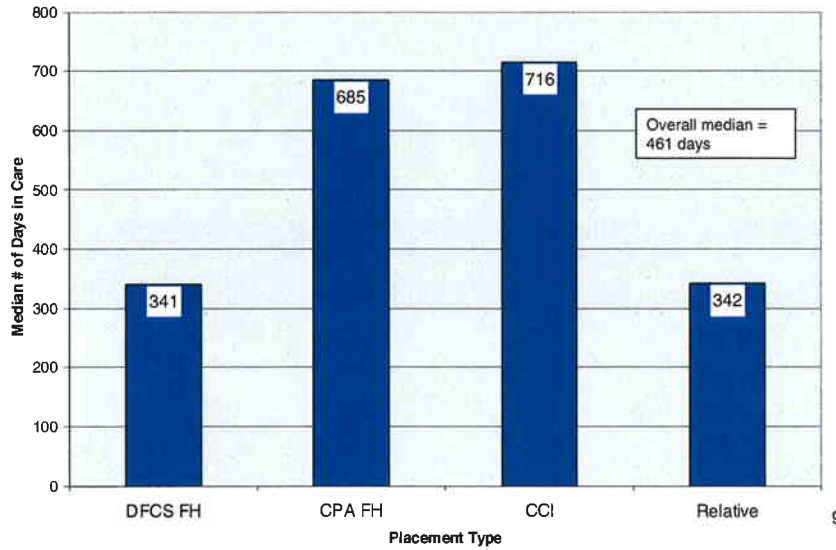
7

## Average Number of Days in Care by Placement Type – September 2009

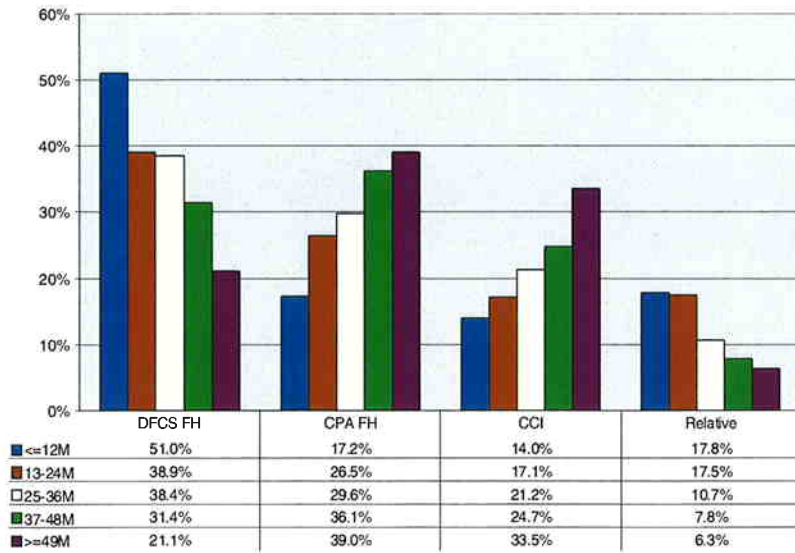


8

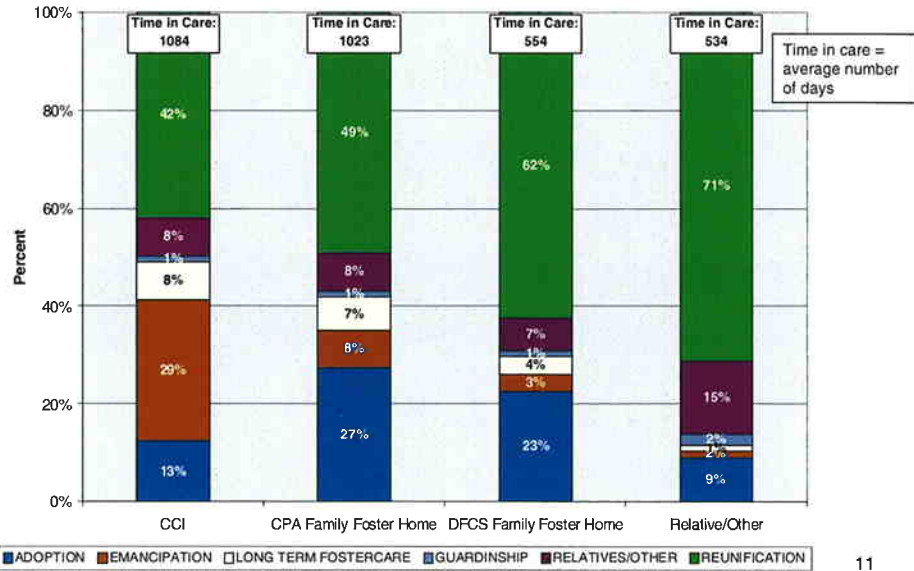
### Median Number of Days in Care by Placement Type – September 2009



### Time in Care by Placement Type – September 2009

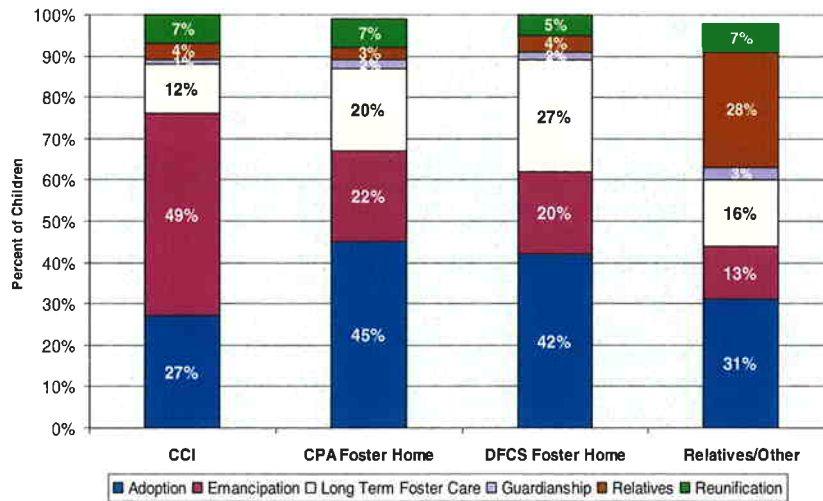


### Permanency Goal by Placement Type – September 2009



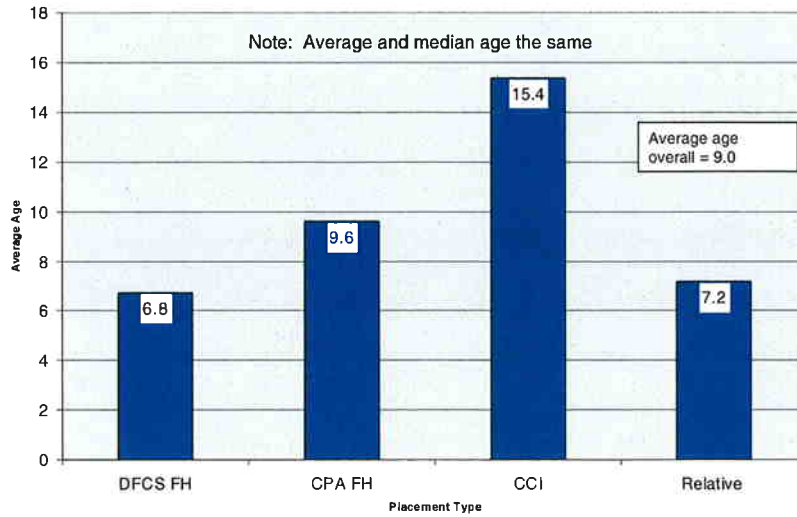
11

### Children in Care For 49 Months or Longer: Permanency Goal by Placement Type – September 2009



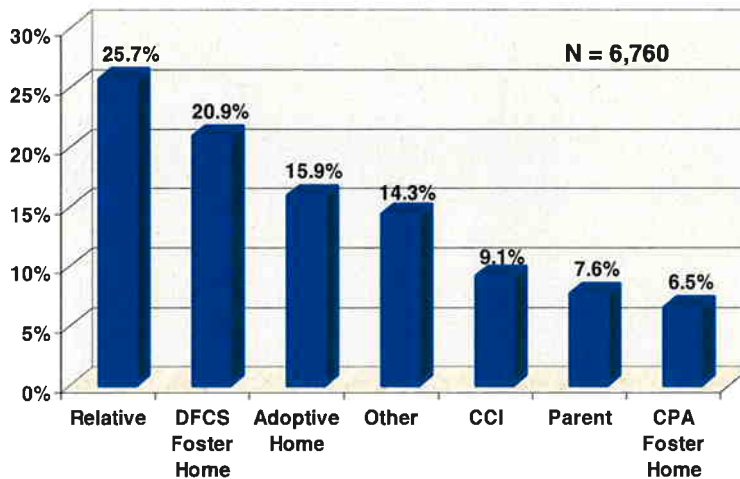
12

## Average Age of Children in Care by Placement Type – September 2009



13

## Children Exiting Foster Care SFY 2009 – Percent by Placement Type



**Note:** Other includes children who were in RYDC, hospital, etc.

14