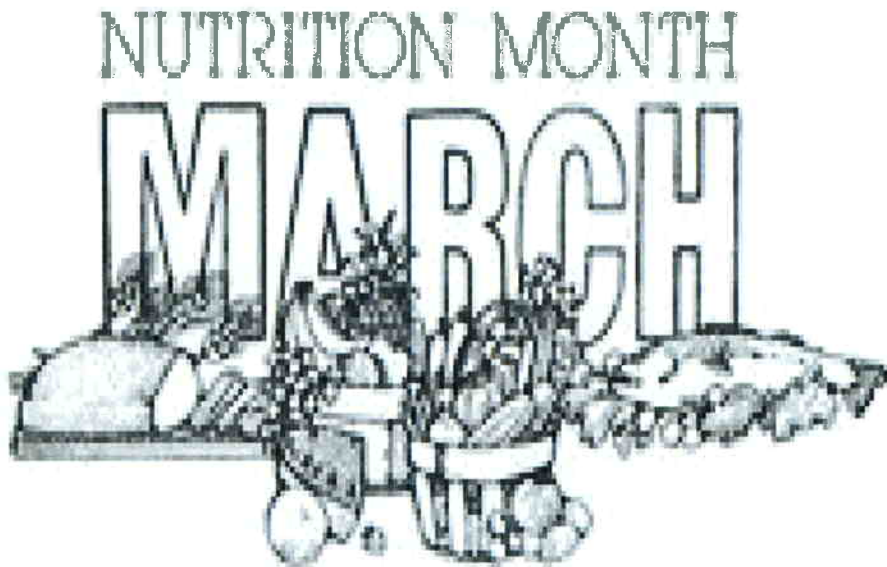


Family Independence



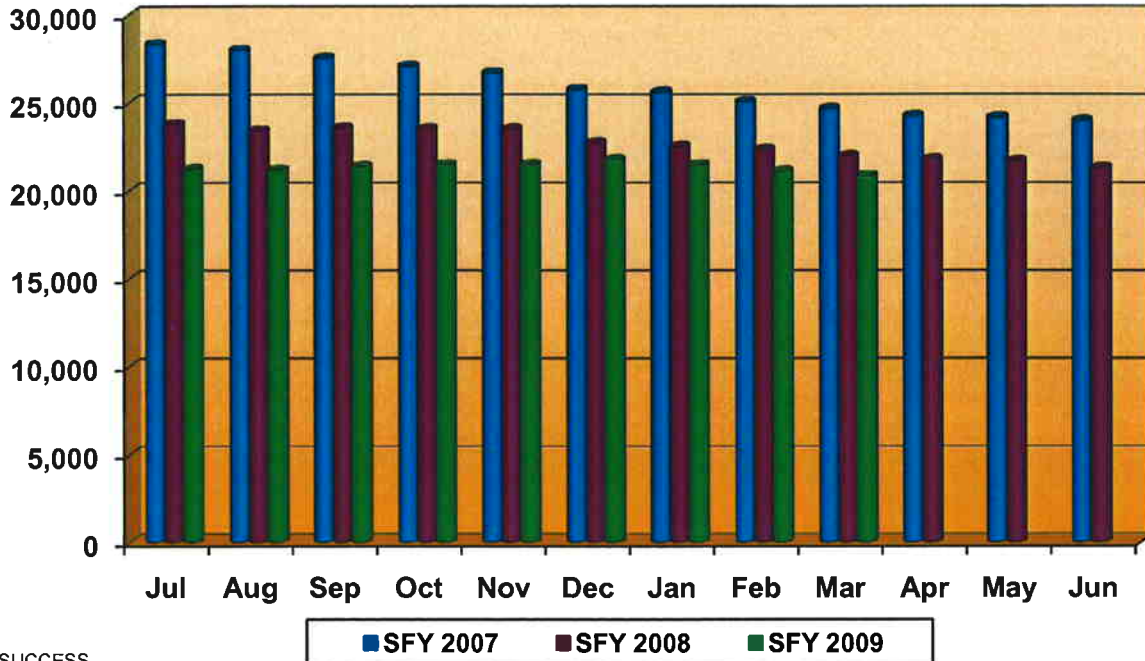
Outcome
Measures and Results
March 2009



Definitions and Data Sources	Pages
TANF Cases (Total/Adult/Child Only) Includes all cases active at some time during the month <i>Source: SUCCESS</i>	1 - 2
Food Stamp Cases Includes all cases active at some time during the month <i>Source: SUCCESS</i>	3
Medicaid Cases Includes case active at the end of the month <i>Source: SUCCESS</i>	3
TANF Work Participation Rate Of all the families with a Temporary Assistance to Needy Families (TANF) work requirement, the percentage of families that met the work requirement. State Target: greater than or equal to 70%	4
Food Stamp Participation Rate The ratio of number of food stamp persons over the estimated persons at or below 125% of the poverty level. State Target: greater than or equal to 59.65% <i>Source: SUCCESS, US Census Bureau</i>	4
Medicaid (ABD) Standard of Promptness Of all the Aged, Blind, Disabled Medicaid applications for benefits, the percentage that was completed within the mandated Standard of Promptness (SOP). State Target: greater than or equal to 96.0% <i>Source: SUCCESS</i>	5
Medicaid (Family) Standard of Promptness Of all the Family Medicaid applications for benefits, the percentage that was completed within the mandated Standard of Promptness (SOP). State Target: greater than or equal to 96.0% <i>Source: SUCCESS</i>	5
Food Stamp Unexpedited (Regular) Standard of Promptness Of all the Unexpedited applications for benefits, the percentage that was completed within the mandated Standard of Promptness (SOP). State Target: greater than or equal to 97.0%	6
Food Stamp Expedited Standard of Promptness Of all the Expedited applications for benefits, the percentage that was completed within the mandated Standard	6



TANF Cases

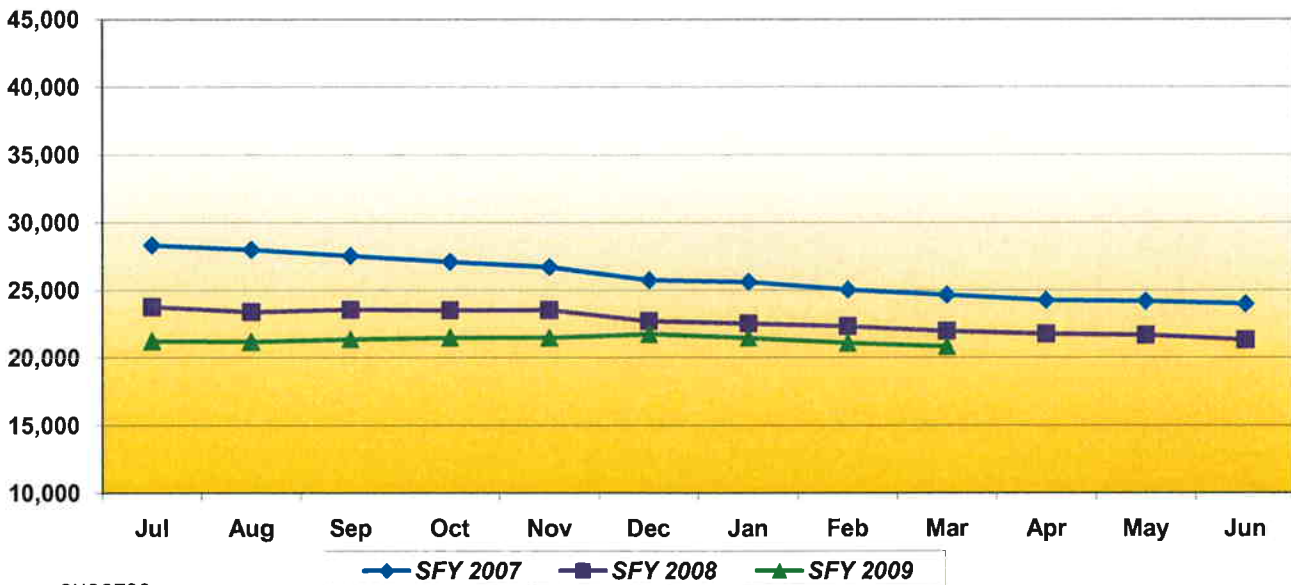


Source: SUCCESS

Jul	Aug	Sep	Oct	Nov	Dec	Jan	Feb	Mar	Apr	May	Jun
28,335	28,003	27,553	27,097	26,702	25,739	25,599	25,031	24,649	24,252	24,175	23,983
23,778	23,410	23,574	23,521	23,525	22,719	22,538	22,336	21,977	21,768	21,678	21,318
21,231	21,189	21,378	21,478	21,494	21,743	21,467	21,098	20,837			

Note: Due to the Deficit Reduction Act (DRA) that reauthorized TANF, the caseload and work participation rates have been revised beginning October 2007. These changes impact the way in which adults are selected and the calculation of hours in some of the work activities.

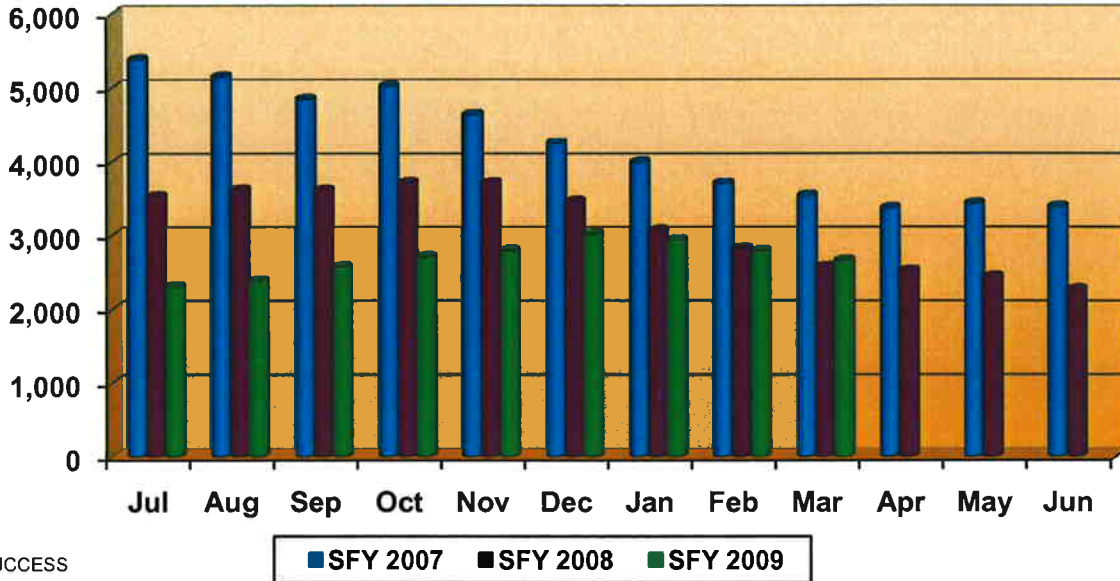
TANF Cases



Source: SUCCESS

Jul	Aug	Sep	Oct	Nov	Dec	Jan	Feb	Mar	Apr	May	Jun
28,335	28,003	27,553	27,097	26,702	25,739	25,599	25,031	24,649	24,252	24,175	23,983
23,778	23,410	23,574	23,521	23,525	22,719	22,538	22,336	21,977	21,768	21,678	21,318
21,231	21,189	21,378	21,478	21,494	21,743	21,467	21,098	20,837			

TANF Cases - Adult

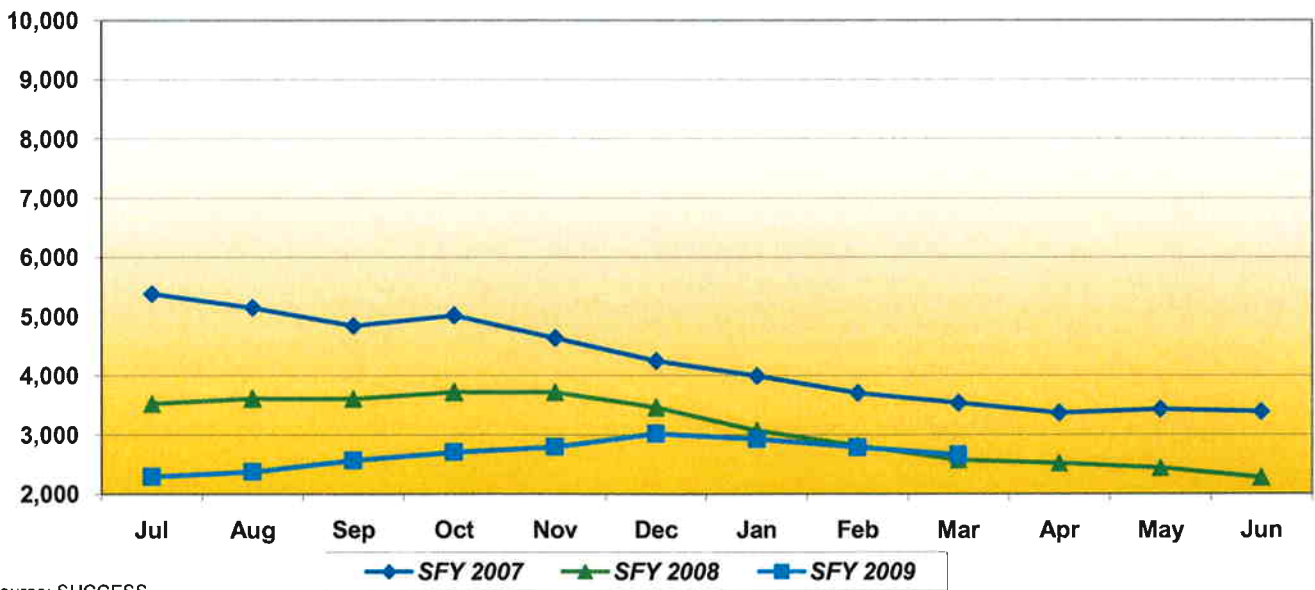


Source: SUCCESS

Jul	Aug	Sep	Oct	Nov	Dec	Jan	Feb	Mar	Apr	May	Jun
5,386	5,152	4,844	5,018	4,635	4,250	3,994	3,707	3,539	3,372	3,434	3,392
3,530	3,615	3,611	3,722	3,718	3,461	3,069	2,819	2,576	2,521	2,439	2,273
2,297	2,378	2,571	2,709	2,795	3,019	2,928	2,788	2,660			

Note: Due to the Deficit Reduction Act (DRA) that reauthorized TANF, the caseload and work participation rates have been revised beginning October 2007. These changes impact the way in which adults are selected and the calculation of hours in some of the work activities.

TANF Cases - Adult



Source: SUCCESS

Jul	Aug	Sep	Oct	Nov	Dec	Jan	Feb	Mar	Apr	May	Jun
5,386	5,152	4,844	5,018	4,635	4,250	3,994	3,707	3,539	3,372	3,434	3,392
3,530	3,615	3,611	3,722	3,718	3,461	3,069	2,819	2,576	2,521	2,439	2,273
2,297	2,378	2,571	2,709	2,795	3,019	2,928	2,788	2,660			