

GEORGIA G-FORCE

**COMMITTED TO ACHIEVING
THE HIGHEST OUTCOMES
FOR CHILDREN & FAMILIES IN GEORGIA**

Isabel Blanco & Sharon Hill, PhD
Georgia Division of Family & Children Services
June 24, 2010

AGENDA

- ✘ Overview of G-Force Process
- ✘ G-Force Hall of Fame
- ✘ Cadence of Accountability
- ✘ Today's G-Force

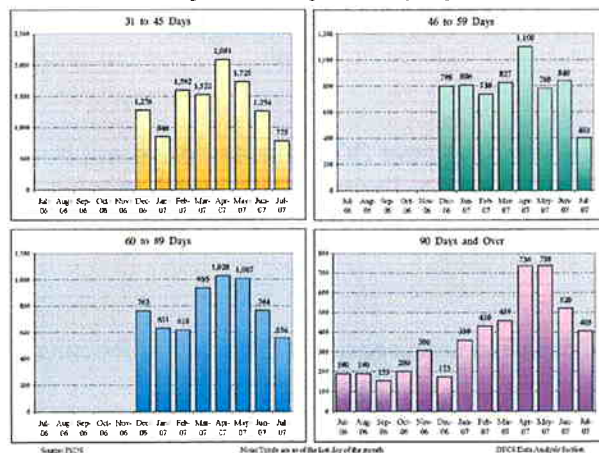
G-FORCE HALL OF FAME

- ✘ Timely completion of investigations of reports of abuse / neglect
- ✘ Appropriate response to reports of abuse/neglect (decreasing unsubstantiated & closed investigations)
- ✘ “Plunging v-neckline:” foster care re-entries within 3 to 6 months of exiting care
- ✘ Every parent every month: caseworker visits to parents

5

Timely Completion of Investigations

Active CPS Investigations Exceeding The 30 Day Requirement - State



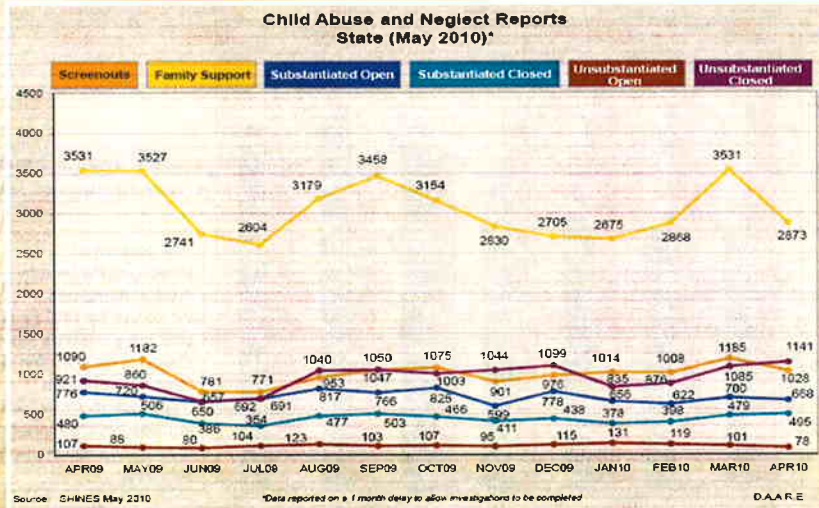
•Investigations must be completed within 30 business days.

•By July 2007, there were 2,138 investigations exceeding the established time frame; 405 had been open for 90 days or more.

Overdue pending investigations
July 2006 – July 2007

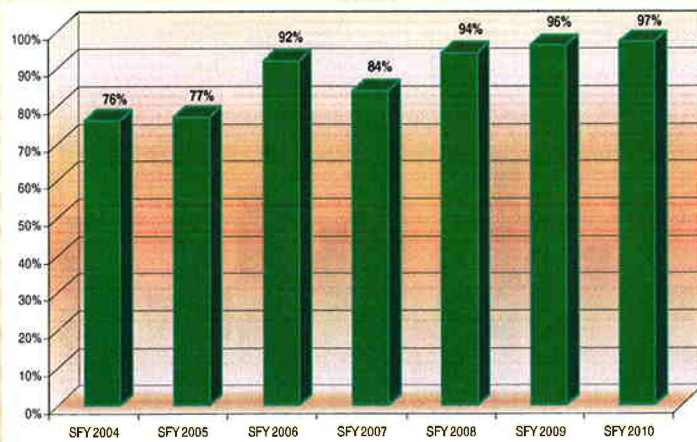
6

LOWER RATE OF UNSUBSTANTIATED & CLOSED INVESTIGATIONS TODAY



We focused on investigating *only* those reports that met the standard of abuse and/or neglect and providing family support services to others.

TIMELY COMPLETION OF INVESTIGATIONS (SFY 2004 - *SFY 2010)



In June 2004, DFCS had 6,201 overdue pending investigations.

Today few investigations pend beyond the established timeframe of 30 business days.

Through intensive training, monitoring and tracking performance in this area, we have increased the timely completion of investigations to 97%.

Note: Information for SFY 2010 reflects investigations completed from July 1, 2009 through April 2010.

HYPOTHESIS (October 2007 G-Force Meeting)



- ✦ The Upsurge in Foster Care Entries in January 2007 are more likely to be Re-Entries.
- ✦ Data needed for next meeting: Percent of children entering care in January 2007 who exited care between October 2006 and December 2006.

13

Length of Time between Children Exiting Care & Re-entering Care

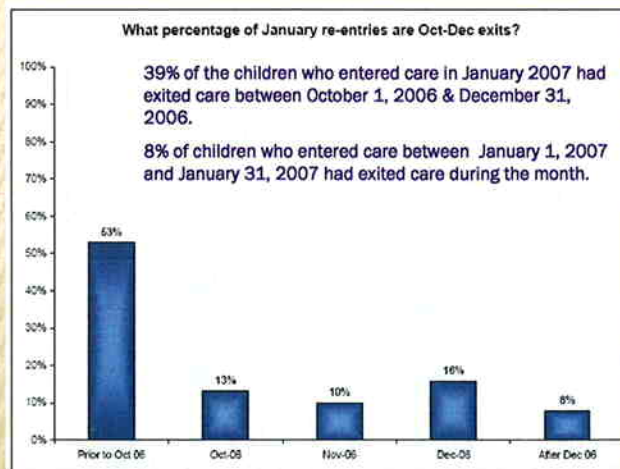


Chart from November 2007 G-Force Meeting.



- ✦ What can we do to prevent children from re-entering care?
- ✦ Particularly, significant are those re-entries occurring in January and subsequent months.

14