

Stopping The Movement: Caregiver Screening, Placement Matching and Placement Stability



Provider G-Meeting October 2010

1

Overview of September G-Force & Today's Agenda

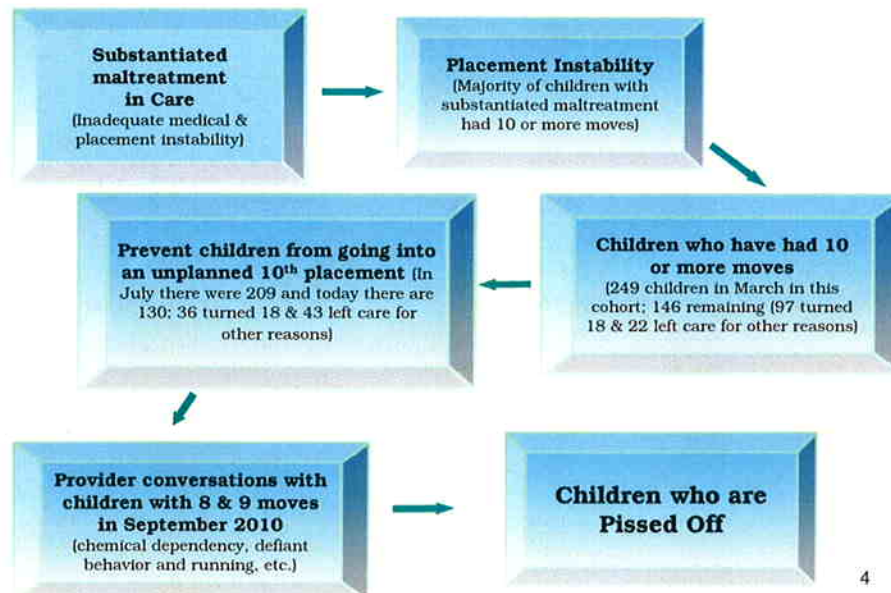
September 2010 G-Force Meeting Discussion	Follow-up: Today's Meeting
<p><i>Children with 8 & 9 moves:</i></p> <ul style="list-style-type: none"> • Characteristics of children • Conversations between providers & children <p><i>Children on slippery slope:</i></p> <ul style="list-style-type: none"> • Reasons for "expected" placement disruptions 	<p>Providers were to have a conversation with their staff about children who are pissed off and practices regarding them.</p>
<p><i>Runaway Trends:</i></p> <ul style="list-style-type: none"> • Children who ran during past 12 months • 372 children were on run during past 12 months. • 60 children ran at least twice (ranged from 2 to 6 times) 	<p>Office of Residential Child Care convened a workgroup with DFCS & private providers to develop collective response to runaway.</p>
<p>Rehabilitation vs. Restoration</p>	<p>Providers were to consider the differences and be prepared to discuss.</p>
<p>Stopping the movement of children in care</p>	<p><i>Two questions:</i></p> <p>Front Door: What resources are needed to stop the movement?</p> <p>Back Door: What do we need to do to manage children who are pissed off?</p>

Agenda

- Pathway to Today's Focus on Children who are Pissed Off
- Profile of Children who are Pissed Off
- Factors that Make Children Vulnerable to Movement
- Strategies to Stop the Movement
- Discussion: Is Our Practice Geared to Rehabilitation or Restoration
- Summary & Next Steps

3

Pathway to Today's Discussion



4

**How did we come to
know/understand that
Children were Pissed Off?
September 2010 Recap**

Provider Reports:

- Conversations with children who had 8 & 9 moves.
- Reasons for “expected” placement disruptions (slippery slope forms)
- Reasons children moved from CCI/CPA between April & September 2010

5

**Conversations Between Providers & Children
(August & September 2010)**

Conversations with children yielded following information:

- Anger and frustration at the “system.”
- Too many placements.
- Too many non-productive rules.
- Desire to return to former foster mother but unable to because of lack of space.
- Desire to reunify with mother.
- Understands what to do to move from one placement to another

6

Reasons for Expected Placement Disruptions (from September 2010)

- Chemical dependency / addiction
- “Defiant” behavior:
verbal threats to family pet, physically and verbally threatening toward foster parents and other foster children, school expulsion, and failure to control bodily functions.
- Two children had been on run at some point and one child had been “AWOL.”

7

Reasons for Moves from CCI/CPA (April 2010 – September 2010)

Behavior Health

- Unmanageable behaviors (aggression, verbal threats, defiant, runaway)
- Suicidal
- Fighting
- Inappropriate sibling contact (sexual)
- Expelled from school

- Arrested (stole van)

- Chronic smoking

- Medical needs

Note: Information provided by providers for the September 2010 G-meeting.

8

Characteristics of Repeat Runners (n = 60) (Children who ran away 2 or more times during past 12 months)

Gender

- More girls than boys (44 girls & 16 boys)

Race

- 49 of 60 were African American, 10 Caucasian and 1 Hispanic

Placement Settings

- 30 of the 60 were in CCIs at the time of the run
- 10 in DFCS foster homes
- 9 in CPA homes

- Average of **10 placements** since entering care (ranged from 2 to 27 placements)

- Average of 28 months in care (ranged from 2 to 143 months in care)

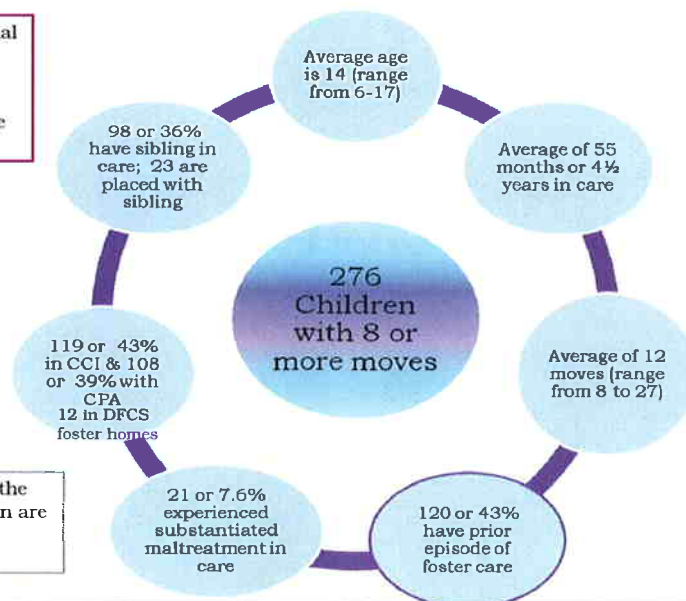
- **Average of 1.2 months in placement prior to run**

- 8 of the 60 children have siblings in care; of those 8, 4 are placed with their sibling

9

Characteristics of Children with 8 or more Moves (October 2010)

From the original cohort of 458 children we began with in March 2010, we have 276 left.

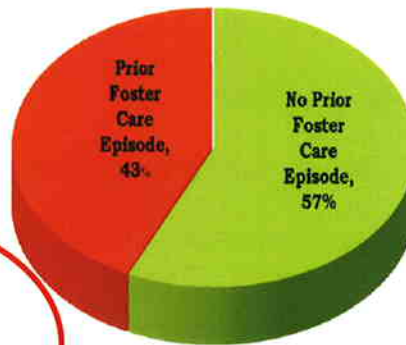


Note: Only 5 of the total 276 children are in the home of a relative.

10

Children with 8 or More Moves & Prior Foster Care Episode

Of all the characteristics listed on previous slide, prior foster care episode is best predictor of movement within care.



The red slice represents children who had been in foster care but left care to be reunified with parents, live with relatives or had been adopted and are now **back** in foster care.

11

Comparison of Children: Previous Foster Care Episode & Those With No Previous Episode

	Children with Previous Foster Care Episode (n=120)	Children with no Previous Foster Care Episode (n=156)
Average age	15 ½	14 ½
Average months in care	49 months (4 years)	68 months (5 ½ years)
Average months in current placement	8.2	11.3
Average number of moves	16	11
Substantiated maltreatment in care	9 (13.3%)	12 (7.7%)
*Number with siblings in care	19 (15.8%)	47 (30.1%)
*Number in placement with at least one sibling	4 (21% / 4 of the 19)	13 (27.7% or 13 of the 47)

*Sibling in care information subject to change after more intense research is conducted.

12

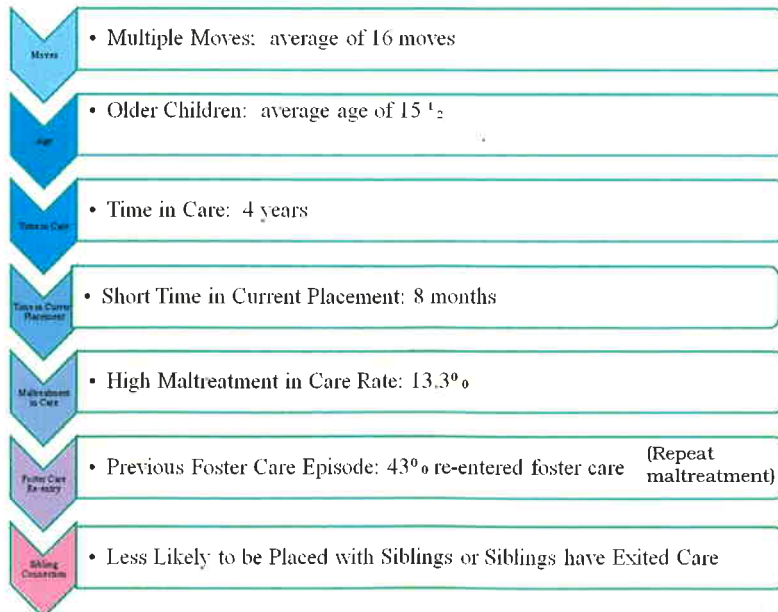
Counties with Highest Concentration of Children with 8 or more Moves & Prior Foster Care Episode

Region	County	Number of children
13	Fulton	17
15	Gwinnett	9
17	Cobb	7
14	Dekalb	6
5	Barrow	5
17	Douglas	5
12	Chatham	4
16	Henry	4
Total		57

57 of the 120 children (48%) are in the 8 counties above.

13
13

Profile of Children who are Pissed Off (Prior Episode of Foster Care)



14

WHAT MAKES CHILDREN VULNERABLE TO MOVEMENT?

Inadequate Screening / Matching of Caregivers—

1. Are we recruiting caregivers who have the protective capacity to meet the needs of the children who are most likely to be placed?
2. Are we assessing the vulnerabilities of children AND matching them with caregivers/providers who can meet their needs?

Not Acting From Children's Perspectives—

1. Do we have the capacity to **hear** children and then move to action on their behalf?
2. In the midst of ensuring our case management responsibilities, are we also extracting actionable tasks based upon our conversations with children?
3. Are we connecting what we **think** our contacts with children are for with **what** we actually hear during those contact —and then acting on both?

15

Strategies to STOP The Movement



16

What is Our Practice? Rehabilitation or Restoration

Rehabilitation

Focus:

Child's Role (Fault)

Message:

"You Need To Change."
Juvenile Justice / DOC
Foundation

Restoration

Focus:

Family / Permanent
Connections

Message:

Strengthen Family / Improve
or Maintain Child's Optimal
Functioning
Social Work Foundation

17

Summary & Follow Up



18
18